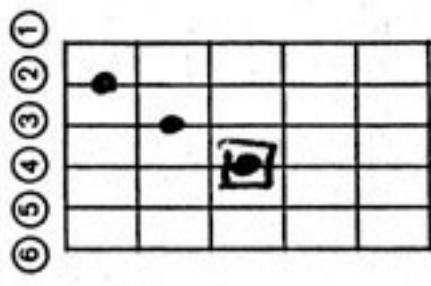


Die 5 Bassordlagen



C Lage



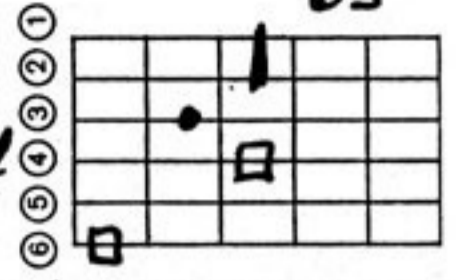
← Dur →



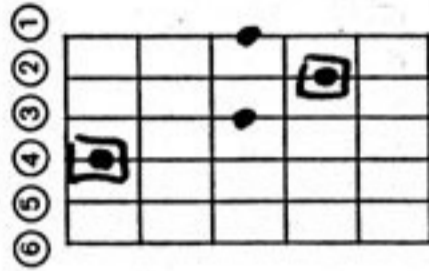
holl



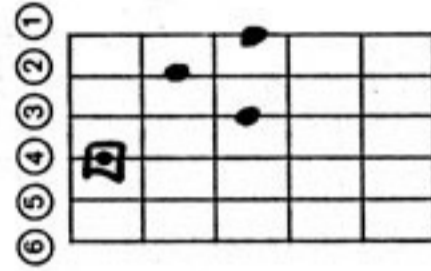
Quintgriff



6 9

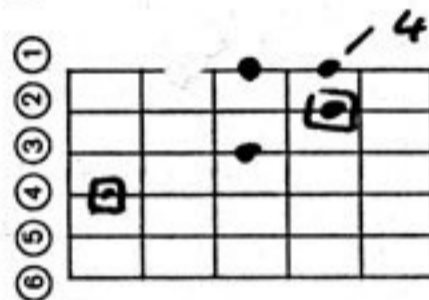
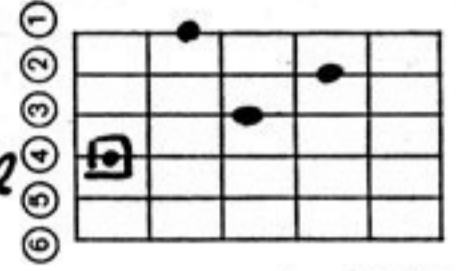


D Lage

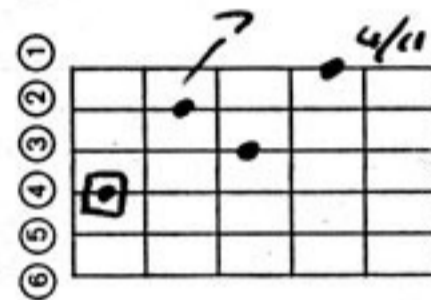


7

holl

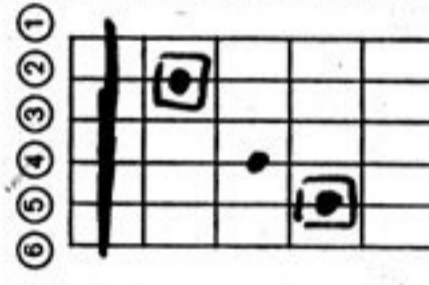
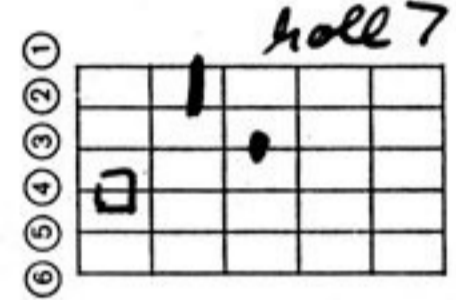


4 5

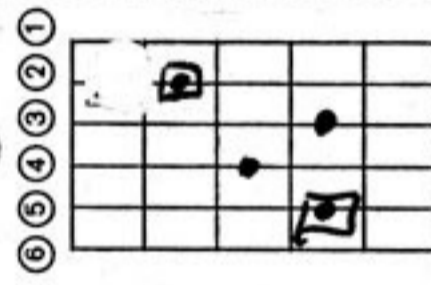


4/11 7 11

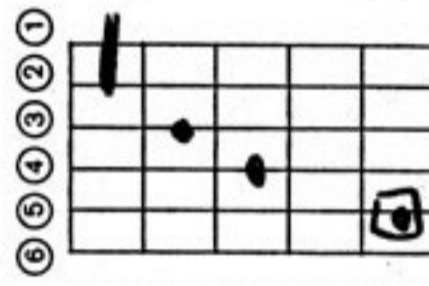
holl 7



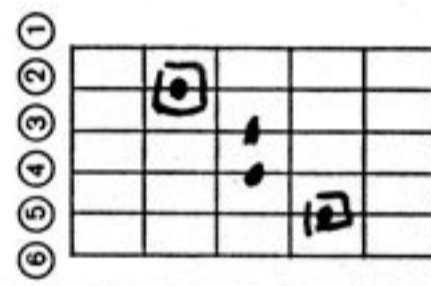
C Lage



7

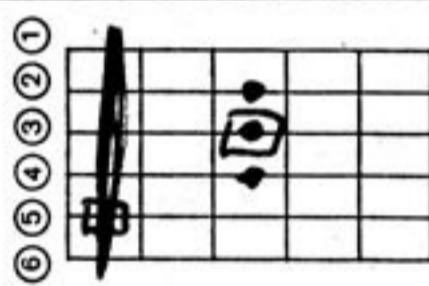
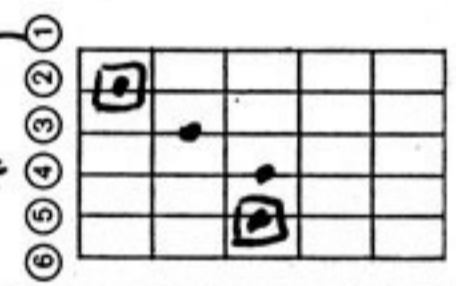


holl 7
(wenn's denn sein muß)

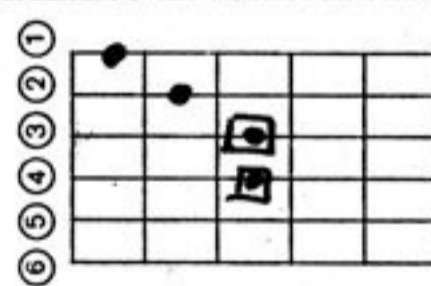


6

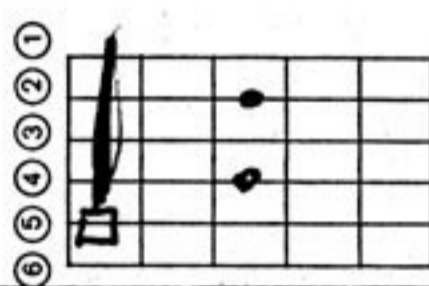
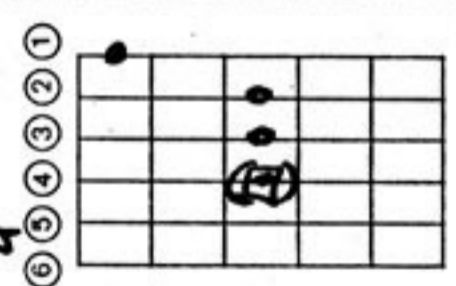
64



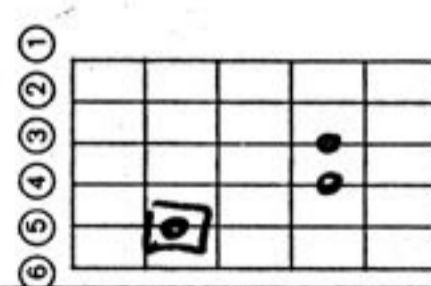
A Lage



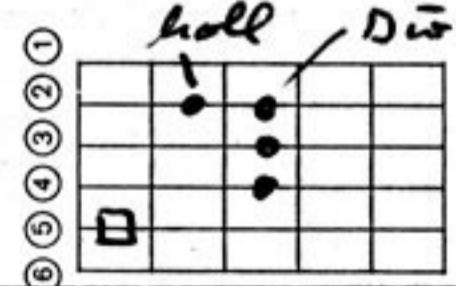
holl / Dur



7



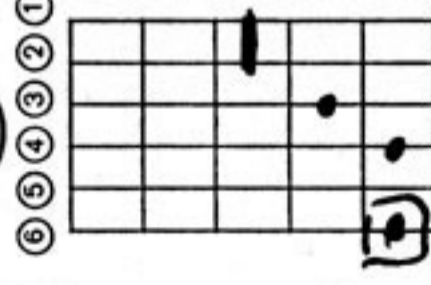
Quintgriff



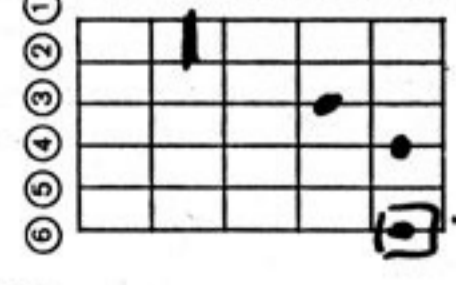
holl / Dur



G Lage



13 =
7 9 11
7 9 6



Dur



13
7/9/11
7/9

